

## CONCERN WORLDWIDE



Community consultation in a coastal area to build resilience. Photo: Concern Worldwide

**Concern Worldwide is an international humanitarian organisation dedicated to the reduction of suffering and working towards the ultimate elimination of extreme poverty in the world's poorest countries.**

Concern began its journey in **1968** in Ireland and it started working with the people of Bangladesh in **1972** by extending its support after the devastating cyclone of **1970**. Since then, Concern Worldwide has been working to address extreme poverty in the most vulnerable communities of the country by implementing needs based, innovative humanitarian and development projects.

In Bangladesh, Concern Worldwide works jointly with different government departments, non-governmental organisations, civil society organizations (CSOs), private sector and other key stakeholders to ensure the sustainable changes in the lives of the extreme poor

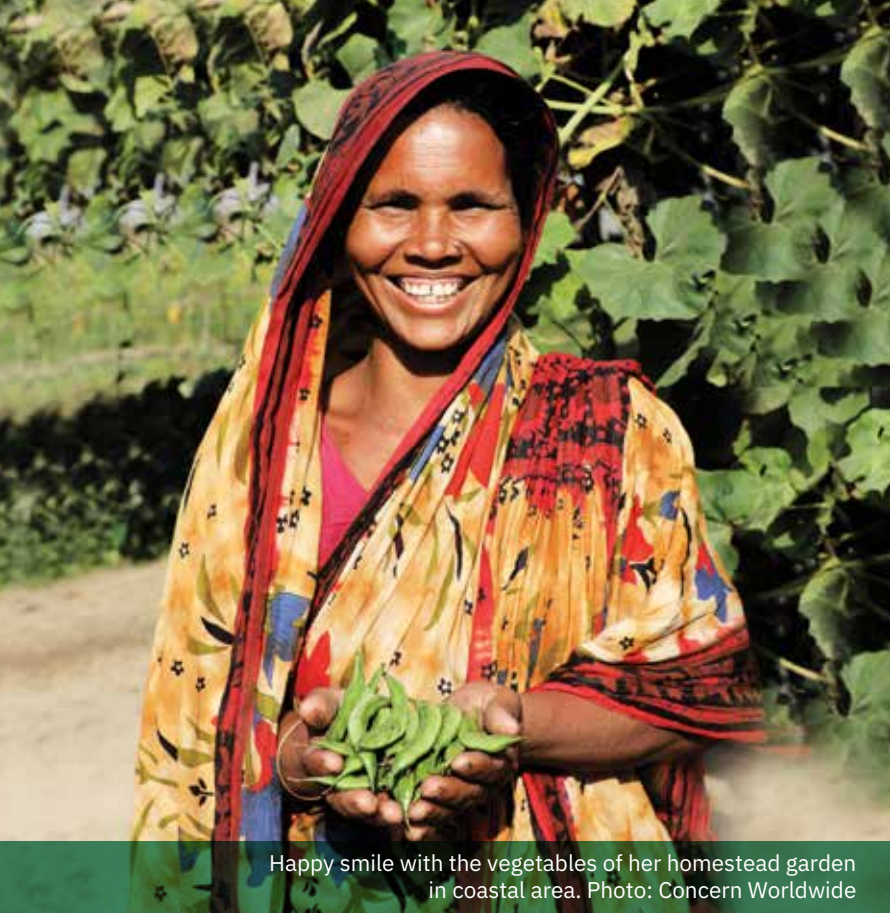


**Concern Worldwide is committed to reaching those most in need.**



**Our Mission** is to help people living in extreme poverty, achieve major improvements in their lives which last without ongoing support from Concern.

To achieve this mission, **we engage in long term development work, build resilience, respond to emergency situations**, and seek to address the root causes of poverty through our development and advocacy work.



Happy smile with the vegetables of her homestead garden in coastal area. Photo: Concern Worldwide

## How We Work



Concern focuses on addressing extreme poverty, inequality and risk and vulnerability through long term programming and emergency response.



Our programme approach is designed to ensure that programmes are able to address the multidimensional nature of poverty and to tackle the context specific barriers that the extreme poor face in escaping poverty.



In emergencies, our approach is founded on humanitarian principles that are embodied in our country strategy. We have provided lifesaving assistance for children under five years old to reduce malnutrition.



In Cox's Bazar camps and host communities, our key priorities are to provide health and nutrition services, build livelihoods and resilience for those most vulnerable groups especially children and women.

## Concern Worldwide Bangladesh's Strategic Priorities:

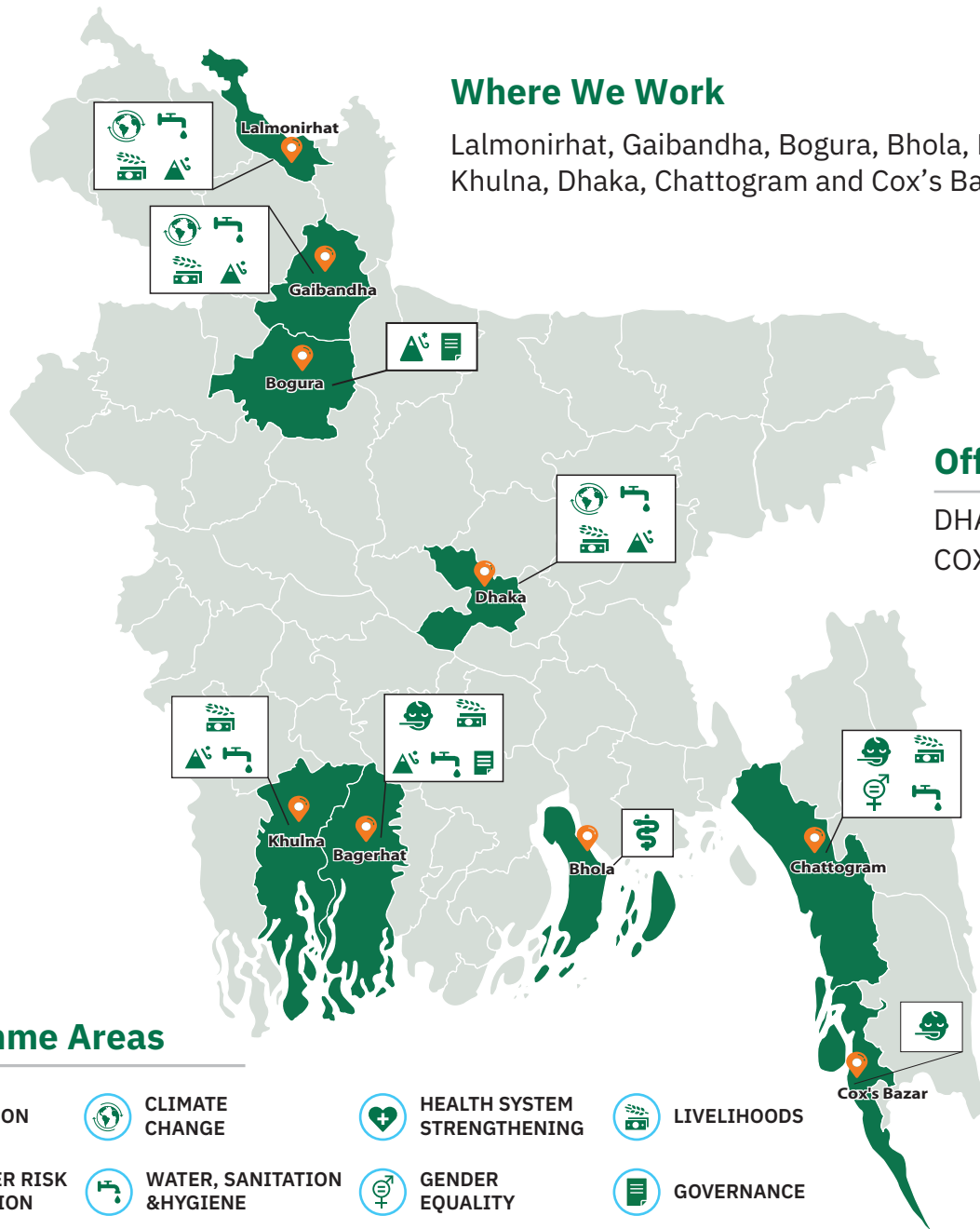
Concern Worldwide Bangladesh's Country Strategic Plan 2022- 2026 aims to contribute to bringing sustainable, positive changes in the lives of people living in extreme poverty in Bangladesh.

We deliver programmes following five strategic objectives, aligned with the Government priorities outlined in the 8th Five Year Plan of the Government and with the Sustainable Development Goals (SDGs).



## Where We Work

Lalmonirhat, Gaibandha, Bogura, Bhola, Bagerhat, Khulna, Dhaka, Chattogram and Cox's Bazar



## Office

DHAKA  
COX'S BAZAR

## Programme Areas



## Some of Our Proven Approaches:

- **Strengthening systems** focusing on health, nutrition, Disaster Risk Reduction (DRR) and Climate Change Adaptation.
- **Improving nutrition governance** through nutrition sensitive and nutrition specific programmes for urban and rural communities.
- **Designing health financing solutions like SMART health card** based services for poor and extreme poor.
- **Enabling communities** to develop their resilience building action plans using the tool- Flood Resilience Measurement for Communities (FRMC).
- **Strengthening the capacity of partners** to respond to humanitarian crises and exploring innovative solutions for responding to disasters.
- **Establishing flood forecasting and early warning system** to protect assets and reduce damage and human casualties.
- **Ensuring effective nutrition services and building resilience** in the Rohingya camps and host communities.



## Our Programmes Focus

- ➔ **Deliver innovative approaches** that strengthen the health and nutrition systems
- ➔ **Improve the wellbeing of people living in extreme poverty in urban areas** following proven, innovative and sustainable approaches that are appropriate for urban contexts
- ➔ **Effective responses delivered in medium to large scale emergencies** through local partners
- ➔ **Scale up and expand Early Warning and Early Action System** strengthening to reduce losses in disaster-prone areas
- ➔ **Provide immediate, long term support and build resilience** among people affected by the Rohingya refugee crisis and support disaster risk reduction (DRR) activities to withstand various shocks and stresses
- ➔ **Institutional capacity building of partners** to ensure our programmes are appropriate, relevant, effective and timely, whilst mitigating any potential risks
- ➔ **Address the challenges of climate change** and environment, practice and advocacy through programmes
- ➔ **Ensure a gender transformative approach** throughout all our programmes and interventions

## Our Donors



Funded by the  
European Union



Humanitarian Aid  
and Civil Protection



## Our Partners

APPG, ASOD, CARE, CUP, ESDO, GUK, IDS, IMC, JJS, Nari Maitree, PHD, Practical Action, RIMES, Rupantar, SAJIDA Foundation, SARPV, SEEP, Shushilan, SKS, WaterAid